

NBMAA

2022 Fall Newsletter





GREETINGS,

As I watch the changing colors of the season paint Walnut Hill Park in vibrant hues, I am delighted to usher in the Museum's fresh lineup of exciting special exhibitions, engaging educational programs, and strategic partnership initiatives. Our fall public programs are already in full swing and planning is well underway for Halloween festivities, including a free Community Costume Day and the much-anticipated return of Museum After Dark parties. Stanley Works Center will once again be filled with the sounds of our annual Walnut Hill Jazz Series, and visitors will delight in weekend Walk-In Tours, new studio classes, and engaging artist talks.

In the galleries, we recently opened *American Realism Today*, the first survey of American Realism by the current New York scene in over half a century. And while we celebrate the final weeks of blockbuster exhibition *30 Americans*, we prepare to present the first of many local artist exhibitions in Landers House, this one featuring the work of Elizabeth Gourlay.

With great love for and curatorial expertise in American photography, I can hardly wait to present

upcoming special exhibition *Edward Burtynsky: Earth Observed*, opening on November 17. Burtynsky's work highlights the impact on the natural world by human industries, such as manufacturing and deforestation, and explores the contemporary topics of climate change and sustainability. *Earth Observed* will harmonize brilliantly on the second floor with an assemblage of American photographers in the NBMAA's permanent collection.

As delighted as we are to see consistent growth of visitation inside our galleries, we are proud of the impact our collection is having beyond NBMAA through artwork loans and digital content. A recent loan of Winslow Homer's *Ship's Boat* to the Metropolitan Museum of Art was experienced by more than 200,000 visitors. Our continuing partnership with Delamar West Hartford has allowed us to extend engagement with vitreographs from the permanent collection beyond our gallery walls with the show *Glass Impressions*. Through these types of loans, we hope to continue to expand the visibility of our collection outside of the NBMAA and strengthen our impact on a wider audience.

I wish to extend my most sincere thanks to American Savings Foundation for their year-round funding of Free Saturday Mornings and tuition assistance for New Britain youth to participate in NBMAA studio art classes and summer camps. Recent Saturday morning visitor, Henry Komelski told the *New Britain Herald*, "There's always something new and it's really what I needed today," he said. "It's calming and I needed to reset everything. I grew up in New Britain. I love coming here. It's very accessible."

I would also like to share my profound appreciation of our Members. This Museum and its objects are here for you and endure because of your steadfast support. In an effort to inspire Membership growth during this year, I invite all of our Members to encourage your friends to purchase a Membership or to gift one. Your involvement is crucial to the life of the Museum, and I thank each and every one of you.

Lastly, I hope to see many of you at the 20th Art Party of the Year on October 22. This year we honor and celebrate Marena Brown-Stitzer and Todd Stitzer, philanthropists, community leaders, and longtime supporters of the New Britain Museum of American Art.

Brett Abbott
Director and CEO

IN MEMORIAM

Lois Blomstrann
Harold Buckingham, former donor
Frederick C. Copeland, longtime Member and donor,
former volunteer
Phyllis A. Hjerpe, former Member
Jacob Krikorian, former Member
Gladys MacDonough, Member
Ann Painter, longtime Member and donor
Edith B. Schatz, longtime Member
Charles B. Simmons, former Member
Thomas F. Tresselt, longtime Member and donor

NEW BRITAIN MUSEUM OF AMERICAN ART

04 | EXHIBITIONS:

American Realism Today

Elizabeth Gourlay: Eclectic Threads

Edward Burtynsky: Earth Observed

Rashmi Talpade: Piecing Together a New Britain Story

09 | Education & Community

11 | Development & Membership

14 | Live Music Schedule

EXHIBITION SUPPORT

Edward Burtynsky: Earth Observed: This exhibition is made possible by the Howard Fromson Endowment for Emerging Artists and by the generous support of The O'Neil Family – Baltimore, MD. In-kind support is provided by Thomas Mach Interiors, Inc.

ABOUT THE O'NEIL FAMILY

The O'Neils began collecting Burtynsky's work several decades ago and built their holdings strategically. From the outset, the goal was to place in permanent museum collections representative selections from his projects. In February 2014, the Baltimore Museum of Art announced a gift of 24 images that included several major works by Burtynsky. Later that year, the Hood Museum of Art at Dartmouth announced a gift of 39 photographs, including six works by Burtynsky.

Following a gift to the Middlebury College Art Museum, the O'Neils, who have strong Connecticut and New England roots, decided to work with the NBMAA to strengthen its permanent photography collection. Gifts in 2019 and 2021 included a total of six works by Burtynsky. *Earth Observed* will include works from their gifts to all four institutions as well as their family collection.

Children's Studio Classes supported by Joseph J. Mucciari, Jr. Fund for Arts Appreciation

Cover: Edward Burtynsky, *Shipyards #11, Qili Port, Zhejiang Province, China*, 2005, Chromogenic color print, 41 x 34 inches (framed), Private Collection

Our thanks to the following NBMAA supporters:



StanleyBlack&Decker

Jay and Lorraine
Breuninger Memorial
Fund



wshu | Public Radio

cthumanities

AMERICAN REALISM TODAY

SEPTEMBER 17, 2022 - JANUARY 1, 2023

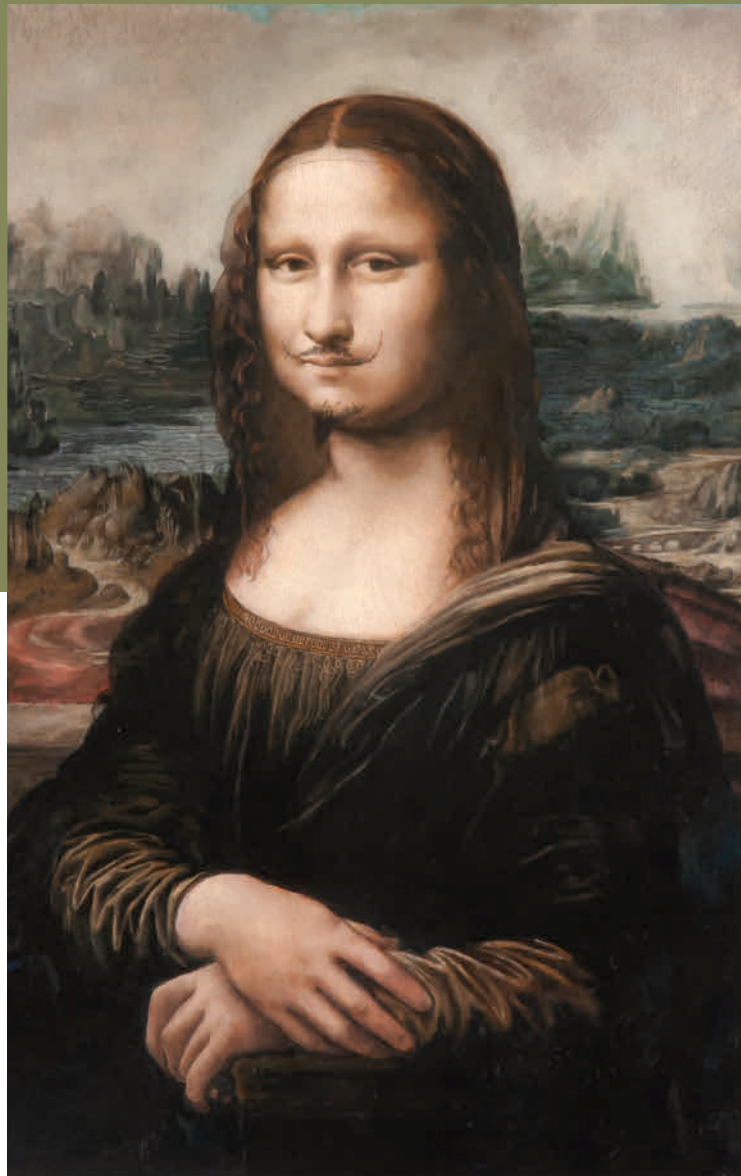
William and Bette Batchelor Gallery, Alix W.
Stanley Gallery, and P.B. Stanley Gallery

Featuring images of the landscape and everyday life, *American Realism Today* celebrates the rich tradition of Realist art in America while reflecting the innovative spirit of our contemporary times. The exhibition encompasses more than 50 paintings, sculptures, and works on paper by a network of 20 artists working across generations, including Robert Lobe, Kathleen Gilje, Joseph McNamara, James Prosek, Faith Ringgold, and many others.

American Realism Today is curated by acclaimed artist Neil Jenney (b. 1945, Torrington, CT), who is known for his unique and influential brand of Realist painting, steeped in the landscape, people, and pastimes of America. The subject of a retrospective exhibition at the NBMAA in 2018, Jenney now returns to the Museum as artist-curator, presenting the first survey of contemporary American Realism made by the current New York scene in over half a century.

Participating Artists:

Leonard Dufresne	Joseph McNamara
Bernard Edwards	Tom Otterness
Kathleen Gilje	James Prosek
Tim Hoffman	Faith Ringgold
Neil Jenney	Sally Ross
Larry Kagan	Ki-young Sung
David Kessler	Alison Elizabeth Taylor
Justen Ladda	Mercer Tullis
Victor Leger	Yoichiro Yoda
Robert Lobe	Charles Yoder



Kathleen Gilje, *Mona Lisa, L.H.O.O.Q., Restored*, 2015 Oil on canvas, 40 7/8 H X 31 3/8 inches

Joseph McNamara, *Gas Separator, Midway-Sunset Oil Field*, 2016, Oil on panel, 40 1/2" x 48 1/2," Collection of Neil Jenney

ELIZABETH GOURLAY: ECLECTIC THREADS

OCTOBER 7, 2022 - JANUARY 29, 2023

Landers House

The NBMAA is proud to debut a new series of exhibitions in our recently restored Landers House, highlighting local artists that contribute invaluable to the cultural enrichment of our region and beyond. Inaugurating the series, Chester-based artist Elizabeth Gourlay presents her first solo exhibition at the Museum, entitled *Elizabeth Gourlay: Eclectic Threads*.

"This group of collages and paintings spans from 2011 to the present and shows my continued studio exploration of color and form. My collages are created from found and painted paper pieces, cut and arranged in playful, ordered, or chaotic ways. The works are the starting point for gouache paintings and larger works which evolve gradually as I work with changes in scale, color, light and shape.

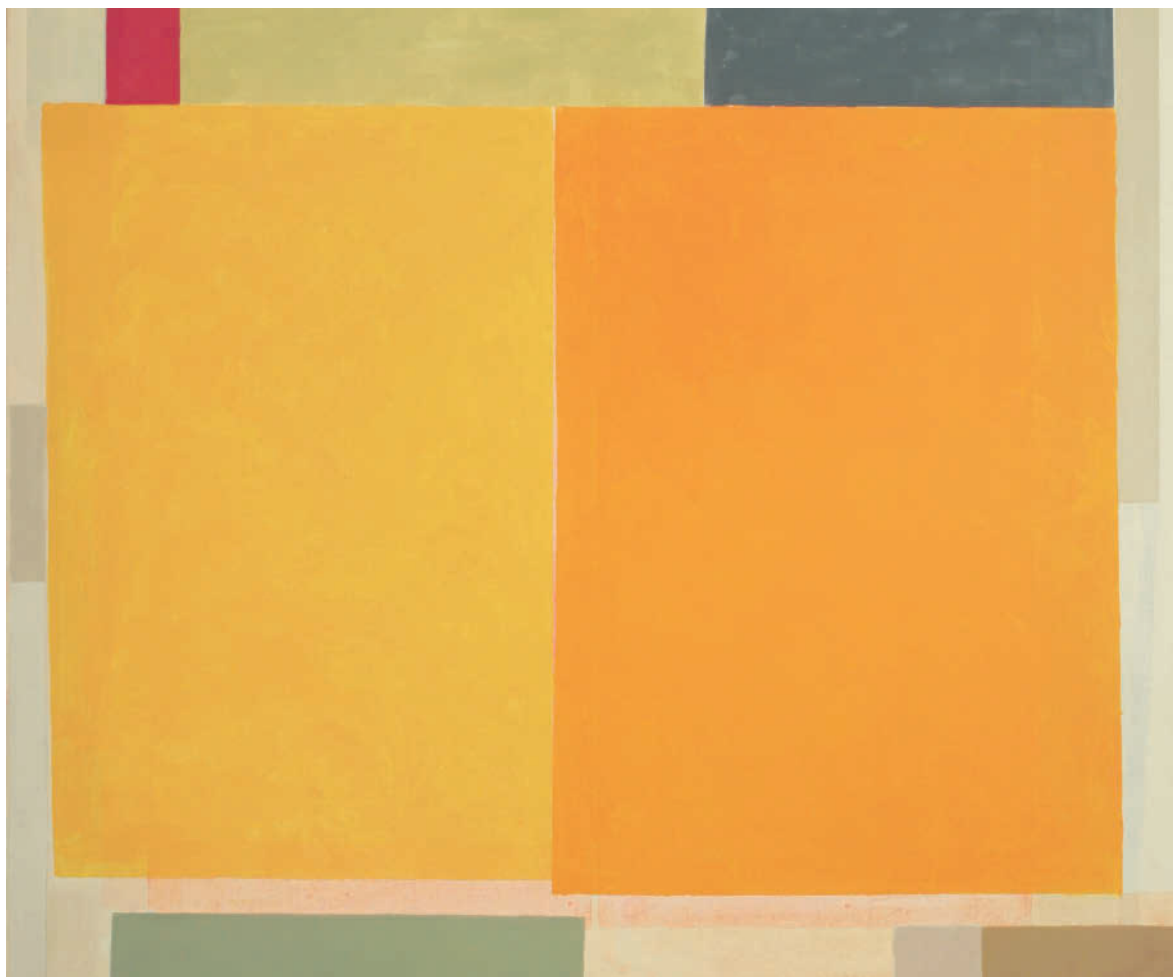
I recognize many influences to my visual thinking. I can sense some from the house I grew up in, designed by my father, and in turn with influences ranging from Japanese design to the Bauhaus. His was a unique style that included white stucco exterior walls with broken symmetry in window shapes and

rooflines. His open interior spaces held elegant geometries often punctuated by dark wood trim. My mother, an interior designer, has also been a strong influence with her masterful use of color and love of fabric and textiles. My parents often collaborated, and I was introduced through them, to many dynamic, poppy colors and designs of the 1960's, in addition to the subtle rich and harmonic colors of Jack Lenor Larsen's fabric.

Similar early influences have come from studying artists, architecture and textiles from different cultures, including the work of Anni Albers and Paul Klee. There is a continuous and eclectic threading of ideas, in this body of work that reflects these interests and the explorations of my vocabulary of bars, lines, colors, and shapes. It is my hope that these forms and colors evoke the emotional and the aesthetic threads and that they present the viewer with an opening to a cultural but also a personal and purely abstract experience."

- ELIZABETH GOURLAY

Elizabeth Gourlay, *T orange 2*, 2018, acrylic on canvas, 40" x 40", Courtesy of the artist





EDWARD BURTYNSKY: EARTH OBSERVED

NOVEMBER 17, 2022 - MARCH 19, 2023

Stitzer Family Gallery and Robert & Dorothy
Vance Atrium

Edward Burtynsky's astonishing photographs depict, at large scale, our human impact on the planet—an endeavor that has led him across North America and around the world, and that has resulted in some of the most iconic, beautiful, and unsettling images of our times. In lustrous surfaces and meticulous detail, Burtynsky reveals to us places that are outside of our normal experience, but that we partake of on a daily basis through material consumption. For over 40 years, his images of the global industrial landscape have captured surreal, abstract, and even painterly aspects of natural and human systems on earth—of quarries, mines, logging, dams, oil reserves, water, railcuts, and global manufacturing.

Regarded as one of the world's most accomplished contemporary photographers today, Burtynsky received his first camera at the age of 11 and sought out to photograph nature. As a student, he looked to 19th- and 20th-century photographers, including Carlton Watkins, Edward Weston, August Sander, and Ansel Adams, who explored and documented the North American landscape in its sublime grandeur. Like his predecessors, Burtynsky has remarked that, early on, he “began by photographing the “pristine” landscape, but I felt I was born a hundred years too late to be searching for the sublime in nature.... I wanted to...be true to my generation, to the world I lived in. I decided that what was relevant for our times were pictures that showed how we have changed the landscape in significant ways

Above: Edward Burtynsky, *Rock of Ages #8, Abandoned Section, Wells-Lamson Quarry, Barre, Vermont, 1991*, Chromogenic print, 34 x 41 inches, Private Collection

in the pursuit of progress.” Throughout Burtynsky’s career, he has used his camera to bear witness to the impact of human industry, inviting viewers to look, to discover, and to think. “For me,” he remarks, “these images function as reflecting pools of our times.”

The first major exhibition of the artist’s work in Connecticut and one of the largest in the Northeast ever, *Edward Burtynsky: Earth Observed* examines the artist’s career-long documentation of human impact on nature and comprises examples from nearly every series of Burtynsky’s output from the 1980s to today, including Mines, Quarries, Ship Breaking, China, Oil, Water, and Anthropocene. The exhibition will explore the legacy of landscape art in America, as well as the role of photography in environmental advocacy.

Works in *Edward Burtynsky: Earth Observed* are drawn from the Baltimore Museum of Art, Hood Museum of Art, Middlebury College Museum of Art, Howard Greenberg Gallery, and private collections. This exhibition was made possible through sponsorship and a major gift of important photographs to the NBMAA in 2019 and 2021 by the O’Neil Family of Baltimore, including six iconic works by Edward Burtynsky that are not only featured in the exhibition, but were also its inspiration.

ABOUT THE ARTIST

Edward Burtynsky was born in 1955 of Ukrainian heritage in Ontario, Canada, and received his BAA in Photography/ Media Studies from Toronto Metropolitan University (formerly Ryerson University) in 1982. Burtynsky has exhibited internationally and his photographs are included in the collections of over 60 major museums around the world. He is the recipient of numerous accolades; most recently he was awarded a Royal Photographic Society Honorary Fellowship (2020) and was honored with the Outstanding Contribution to Photography Award (2022) by the World Photography Organization. He currently holds eight honorary doctorate degrees. Beyond his own photography, Burtynsky has also collaborated with director Jennifer Baichwal and Nicholas de Pencier on three documentary films that confront some of the most glaring environmental issues facing humanity, *Manufactured Landscapes* (2006), *Watermark* (2013), *ANTHROPOCENE: The Human Epoch* (2018), which will be screened during the course of the exhibition.

Below: Edward Burtynsky, *Manufacturing #17, Deda Chicken, Chicken Processing Plant, Dehui City*, 2005, Chromogenic print, 40 x 60 inches, Edition 6/9, NBMAA, Nancy and Tom O’Neil, Baltimore, MD, in memory of the Honorable John Normandy Reynolds and his wife, Ann McMenamin Reynolds, 2021.29.3



RASHMI TALPADE: PIECING TOGETHER A NEW BRITAIN STORY

THROUGH NOVEMBER 27

Museum Café

Connecticut-based artist Rashmi Talpade uses diverse mediums to create works inspired by real and imaginary places. *Piecing Together a New Britain Story: The NBMAA City-Scape Project* is a collaborative community project created by local community members under the guidance of the artist over a period of four months. Community members were invited to submit images of New Britain, which were then printed and glued by over 150 participants to create three realistic but imaginary cityscapes of familiar buildings and spaces.

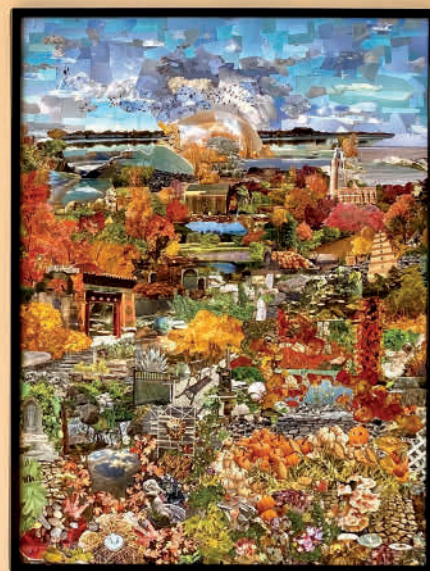
Funded by the Connecticut Office of the Arts and hosted by the New Britain Museum of Art, this project used over 550 photo images submitted by New Britain residents. A collaborative project brings together and builds harmonious relations between diverse communities through art. Participants ranging from 5 to 103 years old came together to create a piece art to be enjoyed by all.

This is the artist's seventh community project and first solo exhibition at the NBMAA. Her installation includes two previous works, *Summer Garden* and *Fall Garden*, on loan from the Yale New Haven Children's Hospital.



Left: Rashmi, *Summer Garden*, 40"x30" photomontage, on loan from the Yale New Haven Children's Hospital

Right: Rashmi, *Fall Garden*, 40"x30" photomontage, on loan from the Yale New Haven Children's Hospital



FAMILY AND COMMUNITY PROGRAMS

EDUCATION AND
COMMUNITY

Children, Families, & Community

This fall, we are excited to offer a variety of educational programs for visitors of all ages. Unlock a new artistic passion in one of our studio classes, dive into learning more about our special exhibitions in a Docent-led tour, and get to know Connecticut-based artists and local businesses at our many lectures and Community Days. We look forward to seeing you and your family creating and learning in our studios and galleries.



FOR THE TWEENS:

Studio@4

Thursdays, 4-5:30 p.m.
Ages 9-12

OCTOBER | Power in Portraits

NOVEMBER | Back to the Basics: Drawing & Painting

DECEMBER | Holiday Gift Making

FREE COMMUNITY DAYS

Hispanic Heritage Celebration

Saturday, October 8, 11 a.m.-2 p.m.

Halloween Spooktacular

Sunday, October 30, 11 a.m.-2 p.m.

Holiday Celebration & Maker's Market

Sunday, December 4, 11 a.m.-4 p.m.



SAINTS BY S.J. X NBMAA | Retour de la Fleur Exhibition by Saints by S.J.

Sunday, October 23, 2022

Showtime 1-2 p.m.; Reception 2-3 p.m.

New Britain's own Saints by S.J. Clothing Line is debuting its newest collection inside the *30 Americans* special exhibition.



LECTURES, SYMPOSIA, GALLERY TALKS, AND FILMS

SYMPOSIUM | Arts on the Block: Celebrating Black Culture & Creativity

Saturday, October 1, 10:30 a.m.-5 p.m.

POETRY READING | Frederick-Douglass Knowles II

Sunday, October 2, 1-2 p.m.

ARTIST TALK | Pierre Sylvain

Sunday, October 16, 1-2 p.m.

LECTURE & BEER TASTING | A History of Nutmeg State Brewing

Saturday, November 5, 2-4 p.m.

COLLECTORS TALK | Tom O'Neil

Saturday, November 19, 3-4 p.m.

SCHOOL SERVICES AND EDUCATOR PROGRAMS

Election Day Professional Development

Tuesday, November 8, 8:30 a.m.-3:30 p.m.

Join the NBMAA for our annual Election Day Professional Development program. This year's theme is STEAM in Museums. By looking at the works of modern and contemporary women artists, including Eva LeWitt, Mildred Thompson, Valerie Hegarty, and Negar Ahkami, we will explore how science, technology, engineering, and math are folded into artistic practice. The day will consist of themed tours, hands-on art making, interactive talks, and a deep dive into what the NBMAA can provide for educators and students.

ADULT STUDIO

TIME TRAVEL & EXPLORE ARCHITECTURAL ILLUSTRATION

Saturdays, October 8, 15, 29, 2-4 p.m.

WATERCOLOR WITH MARY SMEALLIE

Wednesdays, October 5, 12, 19, 26, 2-4 p.m.

Wednesdays, November 2, 9, 16, 23, 30, 2-4 p.m.

Wednesdays, December 7, 14, 21, 28, 2-4 p.m.

MEMBERS-ONLY PAINT NIGHT WITH POSH PAINT

Thursday, October 6, 6-7 p.m.

PORTRAIT PAINTING WITH ANTONY ZITO

Thursdays, October 6, 13, 20, 27, 5-7 p.m.

PHOTOGRAPHY | THE ENVIRONMENTAL PORTRAIT WITH PETER GLASS

Thursday, November 3, 10, 17, 5-7 p.m.

SKETCH WITH THE MASTERS WORKSHOP

Sunday, November 13, 2-5 p.m.



TOURS

DOCENT-LED TOURS

MUSEUM MASTERPIECES TOUR

Saturdays at 1 p.m.

SPECIAL EXHIBITION TOUR | Sundays

30 AMERICANS TOURS

Sundays at 11 a.m. through October 30

EDWARD BURTYNSKY TOURS

Sundays at 1 p.m. beginning December 4

VIRTUAL TOURS FOR ADULT GROUPS

By request Tuesdays-Fridays

Available themes include our Highlights of the Permanent Collection, Women in Art, and African American Art and Artists



DEVELOPMENT

Membership

With the new fall season comes new opportunities for Member engagement at the Museum. We look forward to seeing all Members at the Annual Meeting of the Membership on October 26 at the Museum. Looking ahead this season, Members can also enjoy special discounts on their purchases of winter holiday merchandise from both local vendors and the Museum Store at this year's Members Shopping Day on November 15.

The NBMAA is committed to growing our Membership base in the coming year. Please encourage your friends and colleagues to become Members and consider purchasing a gift Membership for a loved one this holiday season.

Top: Christine Ivers, *Contemplating Isabella*, Pastel, 2021, 18" x 19.5"

ANNUAL MEETING REMINDER

Save the Date for the NBMAA Annual Meeting of the Membership on Wednesday, October 26, 2022, at 4 p.m.

NOR'EASTER WINNERS

Congratulations to the winners of *Nor'Easter: The 52nd Annual Juried Exhibition!*

First Prize: Christine Ivers

Second Prize: Ellen Schiffmann

Third Prize: Peter Seltzer

Juror's Choice: Heidi Palmer and Michael Yurgeles

Visitors' Choice: Angela Godoy

Thank you to all of the artists that submitted to this year's exhibition and to juror Dr. Anna Swinbourne.



MEMBER SHOPPING DAY

Join us on November 15 as we once again open our Museum doors for the annual Member Shopping Day! We will be bringing in holiday gifts and winter merchandise sourced from our New England vendors alongside our beautiful Museum Store merchandise. In addition to our Museum Store, this shopping experience will extend to both the Café and Stanley Works Center, as well as DIY gift wrap station in the Stanley Black and Decker Makerspace.

Members will save at least 20% off their entire purchase. Draw a pencil at checkout for an additional discount. One lucky shopper may get their entire purchase for free!

Registration is required.

To redeem these discounts and be eligible to attend Shopping Day, join or renew your Membership online at nbmaa.org/support-us.

**REGISTER
HERE:**



MOVER & SHAKER SPOTLIGHT

RUTHIE DAVIS

The New Britain Museum of American Art holds an indelible spot in my soul. I grew up spending many hours at the NBMAA as my mother was a regular volunteer. I have powerful memories of the various rooms, the works of art, the big winding staircase (I think is no longer there...), and even the smells and sounds of the place. At the time, it all felt larger than life. It represented possibility, far-away places, vision, and that dreams can come true.

I carried this feeling with me throughout my life and career, and ultimately, it was partly responsible for me believing that launching my own designer shoe brand was possible. When I was asked by the NBMAA to create a retrospective of my work for the Museum in 2010, it all came full circle and was a highlight of my career. Especially for the fact that my mother and father, who were such ardent fans and loyal Museum Members, were both there to celebrate the exhibition launch on March 25, 2010, of *Ruthie Davis Shoes: Couture, Futuristic Design*. My father quite suddenly passed away a few months later, and I will forever cherish the moments with him and my family that night at the monumental gala.



As much as the larger than life works of art inspired my life, it is the community at the NBMAA that really shaped me. The environment is one of learning, sharing, supporting, and growing together. I so enjoyed working with the staff on my Ruthie Davis shoe exhibition, and now as a member of the Education Committee, I am honored to interact with the most dedicated and caring team of people, who are continually striving to improve and reach people. It is so heartwarming to be part of an organization that is focused on the positives at a time when the world has been through so much. The NBMAA is a place where you can dream and believe and actively participate! It's all good vibes at the NBMAA, and I am here for it 100%!

PREMIER MEMBERS LIST

Chairman

Bruemmer Family Charitable Trust
Mrs. Beverly Buckner-Baker
Mr. and Mrs. Michael E. Cassella
Mrs. Rhoda L. Chase
Ms. Cheryl A. Chase and Mr. Stuart Bear
Mr. and Mrs. Charles J. Hamm
Mr. Bradford Korder

Director

Jay and Allison Bombara
Mr. and Mrs. Kenneth L. Boudreau
Mr. and Mrs. Russell E. Burke III
Dr. and Mrs. Peter D. Byeff MD
Ms. Kay Knight Clarke
Dr. and Mrs. Martin Cooper
Anita and Anthony Ferrante
Mr. Stephen F. Hard and Mr. Mark
Giulietti
Mrs. Jean H. Holden
Mr. John N. Howard and Ms. Wendy D.
Kirkland
Mr. and Mrs. David G. Jepson
Dr. and Mrs. Richard L. Judd
Dr. and Mrs. David A. Lund
Dr. Timothy P. McLaughlin and Dr.
Marian F. Kellner
Mr. and Mrs. John R. Rathgeber
Ms. Madeleine Rudin and Mr. Grant
Johnson
Mr. and Mrs. Thomas Soyster
Mr. Todd Stitzer and Mrs. Marena
Brown-Stitzer
Dr. and Mrs. Peter P. Yu

Leader

Dr. Duffield Ashmead and Mr. Eric Ort
Dr. Susan G. Austin-Warner
Atty. Kenneth J. Carifa and Mr. Mark S.
Garavel
Mr. and Mrs. Arnold L. Chase
Mr. and Mrs. Brendan T. Conry
Ms. Marie Dudley
Dr. and Mrs. Robert L. Fisher
Mr. Thomas C. Flanigan and Mr.
Jonathan E. Stone
Mr. Neal B. Freuden and Ms. Andrea F.
Levy

Mrs. Elaine M. Hobart
Mr. and Mrs. Samuel G. Huntington III
Mr. and Mrs. Jonathan Jarvis
Mr. and Mrs. John M. Jezowski
Dr. and Mrs. Theodore H. Johnson
Mr. Gary W. Knoble and Mr. Robert A.
Black
Dr. and Mrs. M. Stephen Miller
Ms. Michele Parrotta
Mr. and Mrs. Samuel D. Stout
Melinda and Paul Sullivan
Mrs. Claudia I. Thesing Ph.D.
Mr. Albert Tomasso
Mr. and Mrs. William Watson
Mr. and Mrs. Steve J. Weiss
Mr. and Mrs. W. Casey West

American Art Circle

Mr. and Mrs. Brett Abbott
Mr. Ivan A. Backer and Ms. Paula Fisher
Ms. Kimberly C. Burris and Dr. Cliff W.
Wagner
Mr. and Mrs. John O. Byrne
Mr. and Mrs. Halsey M. Cook
Mrs. Kathryn S. Cox
Mr. and Mrs. Jack Czertak
Mrs. Ruth Ann C. Davis
Mr. and Mrs. Richard M. Dighello
Mr. John E. Dillaway and Ms. Jessica
O'Brien
Ms. Christine M. Doty
Mr. and Mrs. John E. Downes III
Ms. Mary Jane Dunn
Mr. and Mrs. Karl Fleischmann
Ms. Hilary Frye
Mr. and Mrs. Robert B. Goldfarb
Mr. and Mrs. Pierre Guertin
Dr. and Mrs. Donald W. Hight
Mr. and Mrs. Charles C. Kingsley
Mrs. Kathleen Krackzowsky
Dr. and Mrs. Michael S. Levine
Mr. and Mrs. Coleman B. Levy
Mrs. Carol LeWitt
Adlyn and Ted Loewenthal
Mr. and Mrs. John S. Manning
Mr. and Mrs. James H. Martin III
Mr. and Mrs. Harry N. Mazadoorian
Mr. and Mrs. Stephen Milliken

Ellla Moyer
Mr. Joseph Orsene
Mr. and Mrs. Robert E. Patricelli
Mr. and Mrs. Paul B. Penney
Mary Margaret Piazza, Ph.D.
Mr. and Mrs. Joseph Pierz
Mr. and Mrs. John E. Reynolds
Mr. and Mrs. Peter Rogers
Mr. and Mrs. René Rosado
Dr. and Mrs. Andrew L. Salner
Mrs. Mary T. Sargent
Mr. and Mrs. Keith Stevenson
Ms. Martha G. Trask
Atty. Lynne A. Ustach
Mr. Roy H. Wiseman and Ms. Lisa C.
Kugelman
Dr. and Mrs. Thomas J. Zaccheo MD
Mrs. Judith Zachs

Additional thanks to the following supporters of our educational programs: Stanley Black & Decker; American Savings Foundation; Community Foundation of Greater New Britain; Greater Hartford Arts Council; The Jack Warner Foundation; and Legrand Wiremold Charitable Contributions Committee.

LIVE MUSIC SCHEDULE

Walnut Hill Jazz Series

Presented in partnership with the Hartford Jazz Society, we return for our 5th year! This annual jazz series is made possible in 2022 by generous funding from the **Charles Parker Trust for Public Music, Bank of America, N.A., Trustee.**

All tickets are \$10.

Doors open at 6 p.m., performance at 6:30 p.m.

Wine & beer available for purchase prior to show; complimentary snacks will be provided.

6:30 PM | Sylvia Bonney Halcyon Lounge

**Trevor Davis Dixieland
Affair**
October 12

Jen Allen Trio
December 14

**Theresa Wright & The
Distinguished Gentlemen**
November 16

Fryderyk Chopin Society of Connecticut

Internationally renowned pianists present the works of Fryderyk Chopin and other musical masters.

3:00 PM | Stanley Works Center

Sonja Fräki
October 23

Ann Schein
November 20

Sunday Music Series

The NBMAA's longstanding monthly concert series, featuring local & regional performances from a variety of musical genres.

3:00 PM | Stanley Works Center

CT Virtuosi Chamber Orchestra presents: "We the People: Culture of Mexico," featuring Rosa Evangelina Beltrán
October 9

Brahams, Bridge & Chopin
November 13

Sonoro: A Contemporary Music Performance
December 11

First Friday

Our signature social event, featuring live music, art, food, spirits, and good friends. New Britain's Best Happy Hour, since 1995!

Members \$7; non-Members \$12

Cash bar available; access to Museum galleries is included with your ticket.

5:30 PM | Stanley Works Center

Still Kickin', featuring The Big City Horns
October 7

Mass-Conn-Fusion
November 4

An Evening of Motown, featuring Theresa Wright
December 2

For detailed information, please visit the website of our program partners, the Fryderyk Chopin Society of Connecticut: www.chopinsocietyct.org/new-index

Attending Concerts in Stanley Works Center at the NBMAA

Concert seating is first come, first served on day of show (effective June 1, 2022), and seating capacity is limited to 120. Pre-registration will no longer be available.

Concert attendees must register at the Front Desk upon arrival. Museum Members are free, and Museum guests are welcome with purchase of a Museum admission ticket.

All shows begin at 3 p.m.; doors to event space will open at 2:30 p.m.



ALTER EGO PHOTOBOOTH | WINE AND BEER | PIZZA | DJ



museum after dark

HALLOWEEN AND COSTUME PARTY

OCTOBER 28 & 29

The best Halloween party in central Connecticut returns after a two-year hiatus! For the first time ever, the NBMAA will be hosting TWO nights of our famous Museum After Dark Halloween party—on October 28th and the 29th. Come to one...or come to both!

Spend the evening partying at the Museum with DJ Dancing, capture some memories of you and your friends in your best costumes at the Alter Ego Photo Booth, and enjoy complimentary snacks & pizza, as well as free wine and draft beer included with your ticket. Cash bar will also be available.

All tickets must be purchased IN ADVANCE. There will be no walk-ins on the day of the event.

21+. You must present valid ID upon arrival, AND YOU MUST bring your bar-coded ticket to enter, which you will receive as a PDF file in an email once your online purchase is complete.

OUR ENTERTAINMENT LINEUP!

- “Enchantments” Witch Shop/Center for Spiritual Development/School for the Magickal Arts
- Curioporum: Paranormal, Occult, & the Strange...
- Tarot Card & Oracle Readings
- “Zombie” caricature artist Matt Ryan
- DJ Will Ortiz (Friday Night) & DJ FED EX (Saturday Night)

Admission: Members \$25; non-Members \$30

BUY TICKETS HERE



NEW BRITAIN MUSEUM OF AMERICAN ART
56 LEXINGTON STREET, NEW BRITAIN, CT
(860) 229-0257 | WWW.NBMAA.ORG



NON-PROFIT ORG.
U.S. POSTAGE
PAID
PERMIT NO. 887
NEW BRITAIN, CT



GIVE THE GIFT OF MEMBERSHIP

NBMAA Memberships make great holiday gifts for friends, family, and colleagues! Be sure to purchase early to ensure a timely delivery.

Already a Member? Consider upgrading for additional benefits. At the Friend's Circle Level and above you will receive access to 1,100+ museums with the North American Reciprocal Museum (NARM) benefit, or at the Artist's Circle and above you will unlock access to the new Sylvia Bonney Halcyon Lounge. Passionate about the NBMAA? Become a Premier Member.

To become a Member, purchase a gift Membership, or upgrade your Membership, please visit nbmaa.org/support-us



@NBMAA



@NBMAA



@NBMAA56



@NBMAA56



NBMAA.ORG

GENERAL ADMISSION

\$15 for Adults
\$12 for Seniors
Children under 18 free
Members FREE
Thursday admission is \$5
after 5 p.m. every week.

MUSEUM HOURS

Monday: CLOSED
Tuesday: CLOSED
Wednesday-Sunday
10 a.m. - 5 p.m.
Thursday: 10 a.m.-8 p.m.

SATURDAY ADMISSION

Free from 10 a.m. to noon
thanks to support from
the American Savings
Foundation.

MUSEUM CAFE

Wednesday-Sunday
10 a.m.-2:30 p.m.
featuring local New Britain
fare.

ACCESSIBILITY

Please inquire at the Front
Desk for any assistance
you may require. We are
wheelchair accessible
and have two wheelchairs
available free of charge.

DIGITAL

www.nbmaa.org
facebook.com/nbmaa
twitter.com/nbmaa
instagram.com/nbmaa56
tiktok.com/@nbmaa56